



**Premier
Properties**
Perth

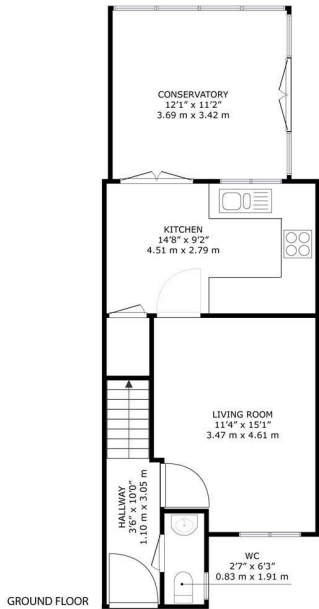


36 Sutherland Crescent, Perth, PH2 9GA
Offers Over £205,000

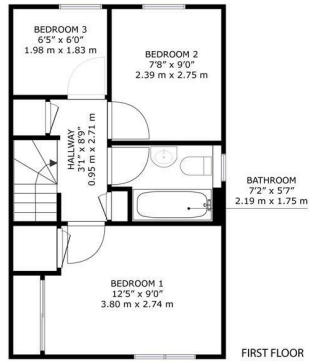
 3  1  2  C



- 3 bedrooms
- Off street parking via a driveway
- Fantastic sized garden
- 2 receptions rooms
- Sought after location
- Close to Perth amenities
- Ideal family home
- Viewing recommended
- Great transport links
- Attic space that is floored



GROUND FLOOR

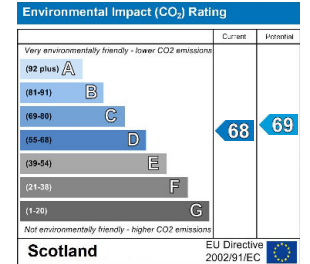
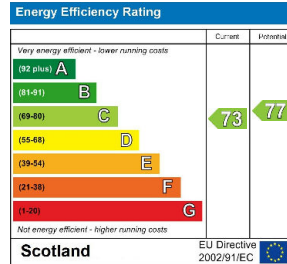


FIRST FLOOR

36, Sutherland Crescent Abernethy, PH2 9GA

GROSS INTERNAL AREA
 GROUND FLOOR: 603 sq. ft, 56.0 m², FIRST FLOOR: 370 sq. ft, 34.4 m²
 TOTAL: 973 sq. ft, 90.4 m²

SIZES AND DIMENSIONS ARE APPROXIMATE. ACTUAL MAY VARY.



These particulars, whilst believed to be accurate are set out as a general outline only for guidance and do not constitute any part of an offer or contract. Intending purchasers should not rely on them as statements of representation of fact, but must satisfy themselves by inspection or otherwise as to their accuracy. No person in this firm's employment has the authority to make or give any representation or warranty in respect of the property.