



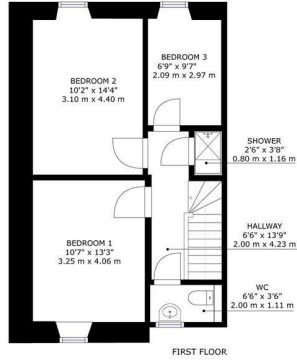
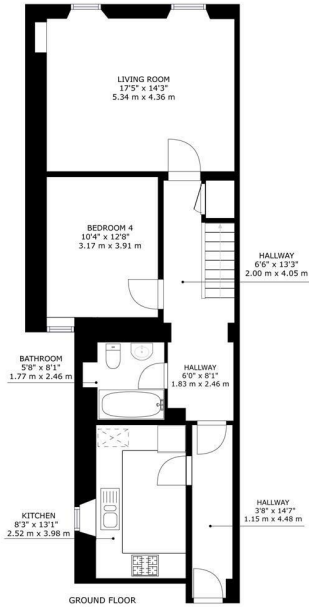
**Premier
Properties**
Perth



39B Dunkeld Street, Aberfeldy, PH15 2AF
Offers Over £165,000

 4  2  1  D

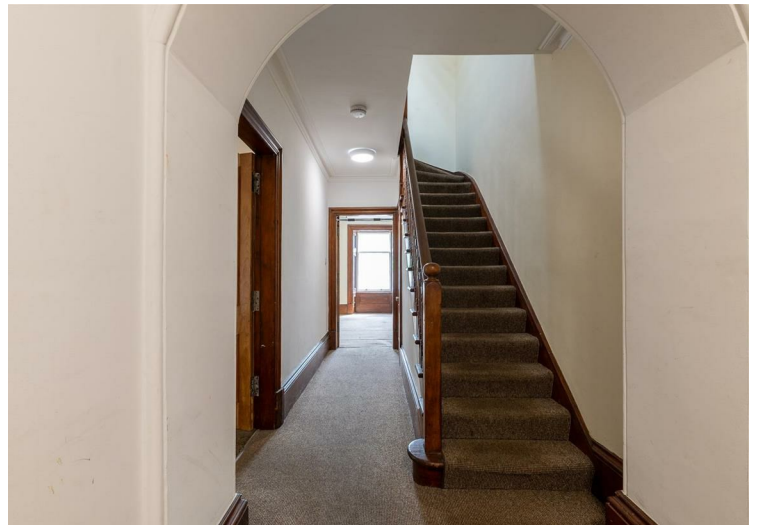
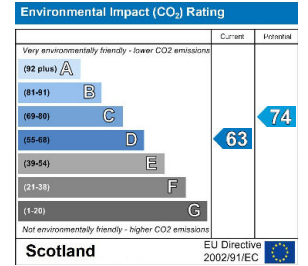
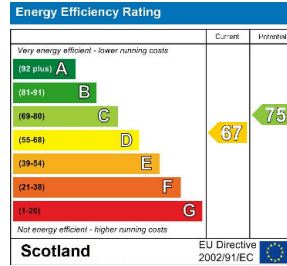
- 4 spacious bedrooms
- 2 bathrooms
- Spacious accommodation throughout
- Close to local amenities
- Easy access to transport
- Viewing highly recommended
- Sought after location
- Private garden grounds



398, Dunkeld Street Aberfeldy, PH15 2AF

GROSS INTERNAL AREA
GROUND FLOOR : 880 sq. ft, 81.8 m², FIRST FLOOR : 548 sq. ft, 50.9 m²
TOTAL: 1428 sq. ft, 132.7 m²

SIZES AND DIMENSIONS ARE APPROXIMATE, ACTUAL MAY VARY.



These particulars, whilst believed to be accurate are set out as a general outline only for guidance and do not constitute any part of an offer or contract. Intending purchasers should not rely on them as statements of representation of fact, but must satisfy themselves by inspection or otherwise as to their accuracy. No person in this firm's employment has the authority to make or give any representation or warranty in respect of the property.