



**Premier  
Properties**  
Perth



## 45 Morris Court, Perth, PH1 2SZ Offers Over £125,000

 2  2  1  B

Set across one level, this beautiful property offers a spacious and thoughtfully designed layout, ideal for comfortable living. Upon entering, you are welcomed by a bright entrance hall leading to a generously sized lounge, which provides direct access to the large kitchen, with space for an additional dining area which also benefits from ample storage and worktop space.

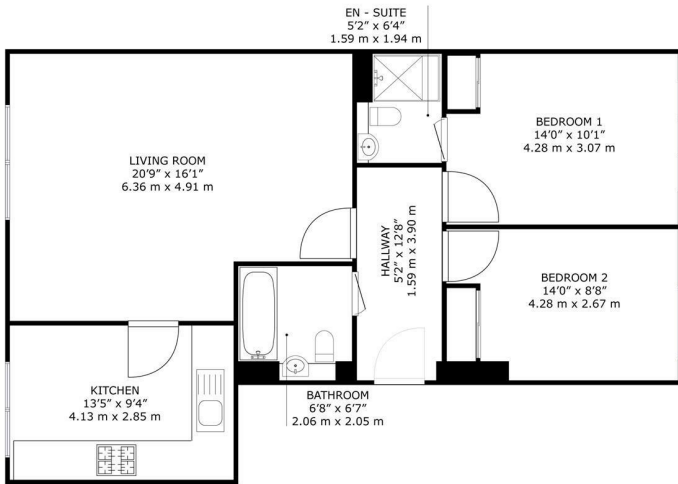
Following through the home, there are two double bedrooms, one further benefitting from an en suite, offering excellent accommodation and flexibility. There is a well appointed family bathroom, completing the home.

Externally, the property boasts allocated parking.

Viewing is recommended to see what this property truly has to offer.

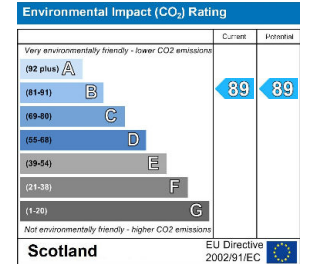
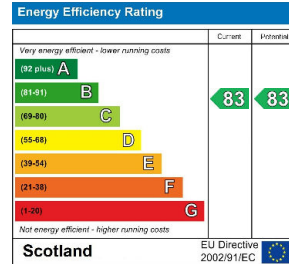
- Contemporary apartment
- 2 Bedrooms
- 2 Bathrooms
- Allocated Parking
- Gas central heating
- Close to all local amenities
- Easy access to transport links
- Viewing recommended





45 Morris Court, Perth, PH1 2SZ

GROSS INTERNAL AREA  
TOTAL: 914 sq.ft, 84.9 m<sup>2</sup>  
SIZES AND DIMENSIONS ARE APPROXIMATE, ACTUAL MAY VARY.



These particulars, whilst believed to be accurate are set out as a general outline only for guidance and do not constitute any part of an offer or contract. Intending purchasers should not rely on them as statements of representation of fact, but must satisfy themselves by inspection or otherwise as to their accuracy. No person in this firm's employment has the authority to make or give any representation or warranty in respect of the property.