



**Premier  
Properties**  
Perth

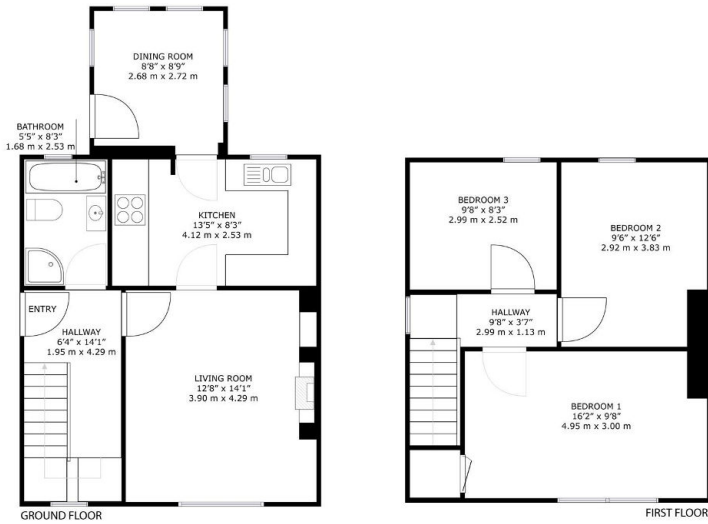


**20 Stanley Crescent, Perth, PH1 5AH**  
**Offers Over £185,000**

 3  1  2  D



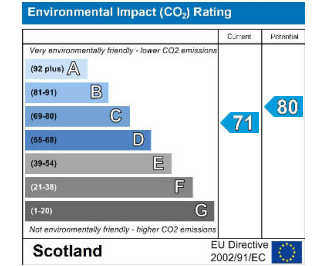
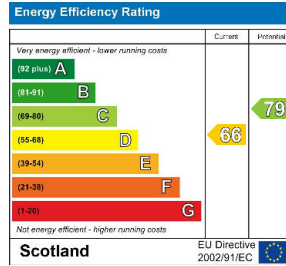
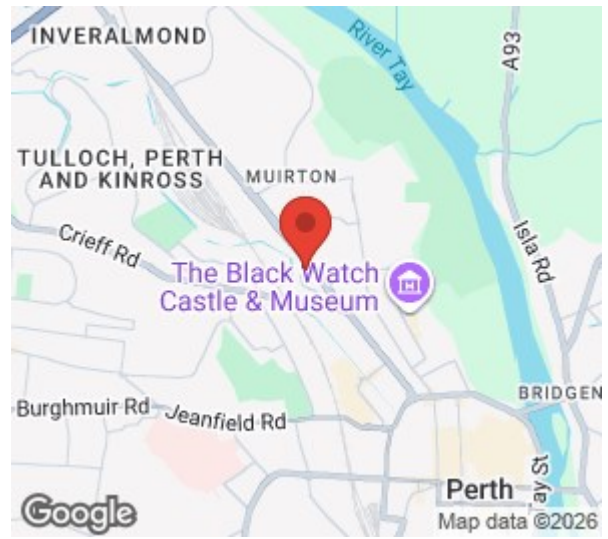
- 3 spacious bedrooms
- 1 modern bathroom
- Modern kitchen with integrated appliances
- Close to local amenities
- Easy access to transport links
- Ideal for first-time buyers
- Viewing highly recommended
- Off street parking via driveway



20, Stanley Crescent Perth, PH1 5AH

GROSS INTERNAL AREA  
 GROUND FLOOR : 579 sq. ft, 53.8 m<sup>2</sup>, FIRST FLOOR : 481 sq. ft, 44.7 m<sup>2</sup>  
 TOTAL: 1060 sq. ft, 98.5 m<sup>2</sup>

SIZES AND DIMENSIONS ARE APPROXIMATE, ACTUAL MAY VARY



These particulars, whilst believed to be accurate are set out as a general outline only for guidance and do not constitute any part of an offer or contract. Intending purchasers should not rely on them as statements of representation of fact, but must satisfy themselves by inspection or otherwise as to their accuracy. No person in this firm's employment has the authority to make or give any representation or warranty in respect of the property.