



**Premier  
Properties**  
Perth



## 1 County Place, Stanley, PH1 4NE Offers Over £120,000



Upon entering, you will find a welcoming reception room, perfect for relaxing or entertaining guests. The property also includes a modern bathroom and kitchen, providing ample storage. The layout is thoughtfully designed to ensure functionality and ease of living.

The flat also features two well-proportioned bedrooms, one with built-in storage. Each room is designed to maximise natural light, creating a bright and airy feel throughout the property.

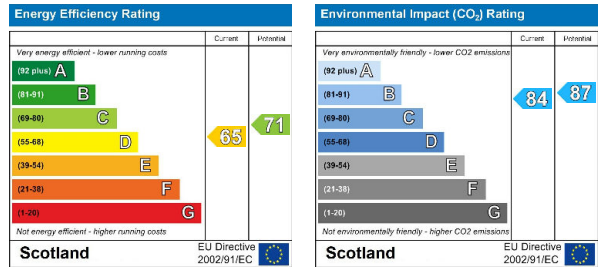
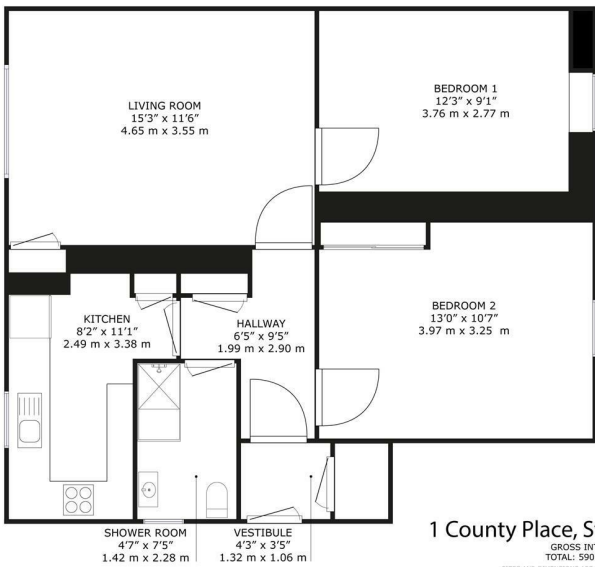
Situated in the picturesque village of Stanley, this property benefits from a tranquil setting while still being conveniently close to local amenities. Residents can enjoy the charm of the surrounding countryside, as well as easy access to nearby shops, schools, and transport links. Many pleasant walks can be enjoyed along the banks of the nearby River Tay.

Externally the property has off street parking along with a large area of private garden grounds.

Viewing is highly recommended to fully appreciate what this lovely home has to offer.

- Two Bedrooms
- Spacious Lounge
- Large Private Garden
- Close To Local Amenities
- Sought-After Area
- Viewing Highly Recommended
- Perfect For First-Time Buyers
- Off Street Parking





These particulars, whilst believed to be accurate are set out as a general outline only for guidance and do not constitute any part of an offer or contract. Intending purchasers should not rely on them as statements of representation of fact, but must satisfy themselves by inspection or otherwise as to their accuracy. No person in this firm's employment has the authority to make or give any representation or warranty in respect of the property.