



**Premier
Properties**
Perth



10 Closeburn Terrace 63 Feus Road, Perth, PH1 2AX Offers Over £120,000

 2  1  1  D

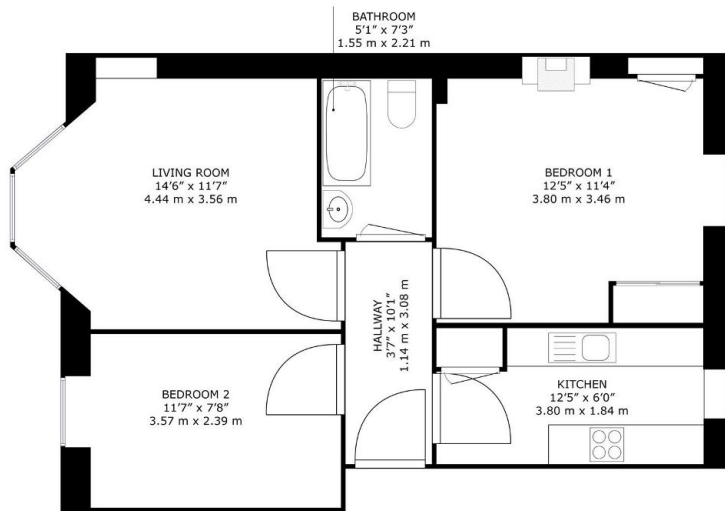
The flat also includes a well-designed bathroom, ensuring convenience and privacy. The layout is both practical and inviting, allowing for a seamless flow between the living areas.

Situated in a vibrant community, this property benefits from easy access to local amenities, including shops, parks, and public transport links, making it an ideal choice for those who appreciate both tranquillity and connectivity.

Whether you are looking to invest or find your next home, this flat on Feus Road offers a wonderful blend of comfort and convenience in the heart of Perth. Do not miss the chance to make this delightful property your own.

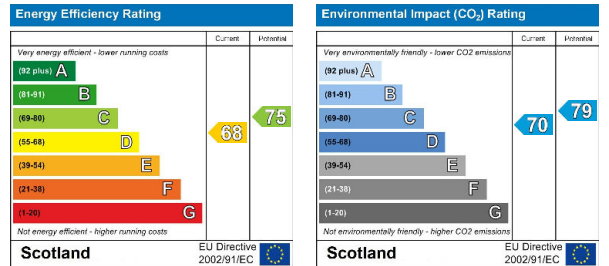
- 2 cosy bedrooms
- 1 modern bathroom
- Spacious reception room
- Close to local amenities
- Easy access to transport
- Perfect for first-time buyers
- Viewing recommended
- Convenient city location





10 Closeburn Terrace, 63 Feus Road, Perth, PH1 2AX

GROSS INTERNAL AREA
TOTAL: 524 sq.ft, 48.7 m²
SIZES AND DIMENSIONS ARE APPROXIMATE, ACTUAL MAY VARY



These particulars, whilst believed to be accurate are set out as a general outline only for guidance and do not constitute any part of an offer or contract. Intending purchasers should not rely on them as statements of representation of fact, but must satisfy themselves by inspection or otherwise as to their accuracy. No person in this firm's employment has the authority to make or give any representation or warranty in respect of the property.