



**Premier
Properties**
Perth



Plot of Land 20 Metres North Of Wilmarean Fairview, Perth, PH1 3HS



Located just 6 miles from Perth, this area offers a perfect rural setting whilst also being ideally situated to enjoy the city living aspects of Perth. The Inveralmond & Broxden Roundabouts are within a short commute, providing access to all major cities, ideal for the commuter.



Planning application number- 25/00602/FLL

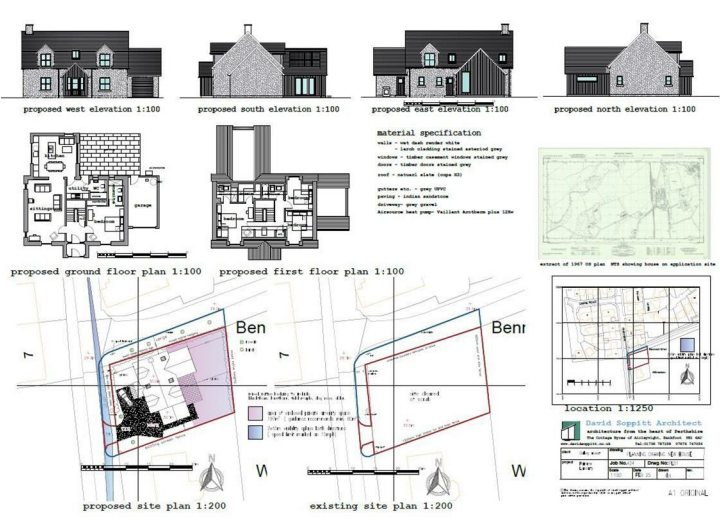
Full details can be found at <https://planningapps.pkc.gov.uk/online-applications/applicationDetails.do?keyVal=SVDBY6MKIBQ00&activeTab=summary>

****Full planning permission and building warrant in place****





Energy Efficiency Rating		Environmental Impact (CO ₂) Rating			
	Current	Potential		Current	Potential
Very energy efficient - lower running costs		Very environmentally friendly - lower CO ₂ emissions			
(92 plus) A			(92 plus) A		
(81-91) B			(81-91) B		
(69-80) C			(69-80) C		
(55-68) D			(55-68) D		
(39-54) E			(39-54) E		
(21-38) F			(21-38) F		
(1-20) G			(1-20) G		
Not energy efficient - higher running costs		Not environmentally friendly - higher CO ₂ emissions			
Scotland		EU Directive 2002/91/EC		Scotland	
				EU Directive 2002/91/EC	
					



These particulars, whilst believed to be accurate are set out as a general outline only for guidance and do not constitute any part of an offer or contract. Intending purchasers should not rely on them as statements of representation of fact, but must satisfy themselves by inspection or otherwise as to their accuracy. No person in this firms employment has the authority to make or give any representation or warranty in respect of the property.