



**Premier
Properties**
Perth



5 Edmund Place, Dunfermline, KY12 7ET Offers Over £130,000

 2  1  1  C

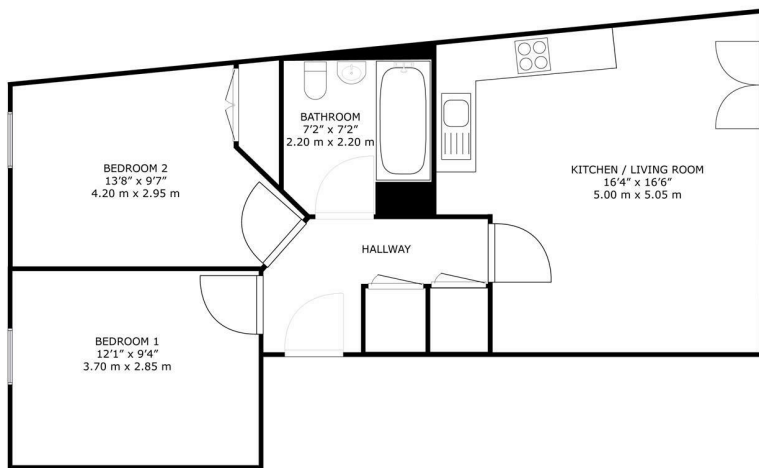
Presented in move-in condition and offering bright & spacious accommodation throughout, the property comprises: Welcoming hallway leading through to the open plan lounge/kitchen area with Juliette balcony & two double bedrooms, one with built in wardrobe. The modern family bathroom with shower over bath completes this home. The property benefits from electric heating, double glazing and ample storage. The blinds will be included in the sale.

There is a communal stairwell with secure entry phone system and residents parking available.

Viewing is highly recommended to fully appreciate what this apartment has to offer.

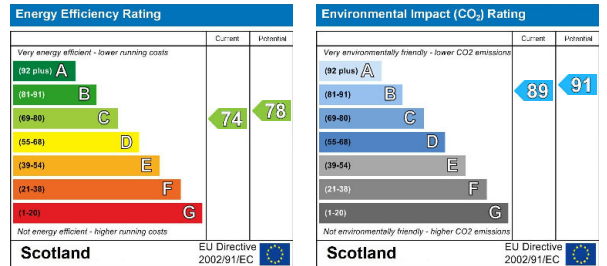
- Two Bedrooms
- Electric Heating
- Residents Parking
- Close To All Amenities
- Move In Condition
- Double Glazing





5 Edmund Place Dunfermline, KY12 7ET

GROSS INTERNAL AREA
TOTAL: 653 sq.ft, 60.7 m²
SIZES AND DIMENSIONS ARE APPROXIMATE, ACTUAL MAY VARY.



These particulars, whilst believed to be accurate are set out as a general outline only for guidance and do not constitute any part of an offer or contract. Intending purchasers should not rely on them as statements of representation of fact, but must satisfy themselves by inspection or otherwise as to their accuracy. No person in this firm's employment has the authority to make or give any representation or warranty in respect of the property.