



**Premier
Properties**
Perth



4 Raeburn Park, Perth, PH2 0ET Offers Over £175,000

 2  1  2  C

This property would make a fantastic home, ideal for a first-time buyer or downsizer. Well maintained, the property is a great opportunity to purchase a wonderful house in a sought after area.

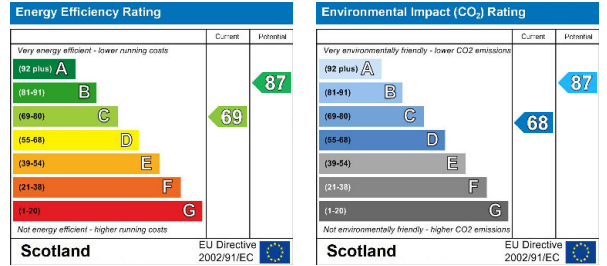
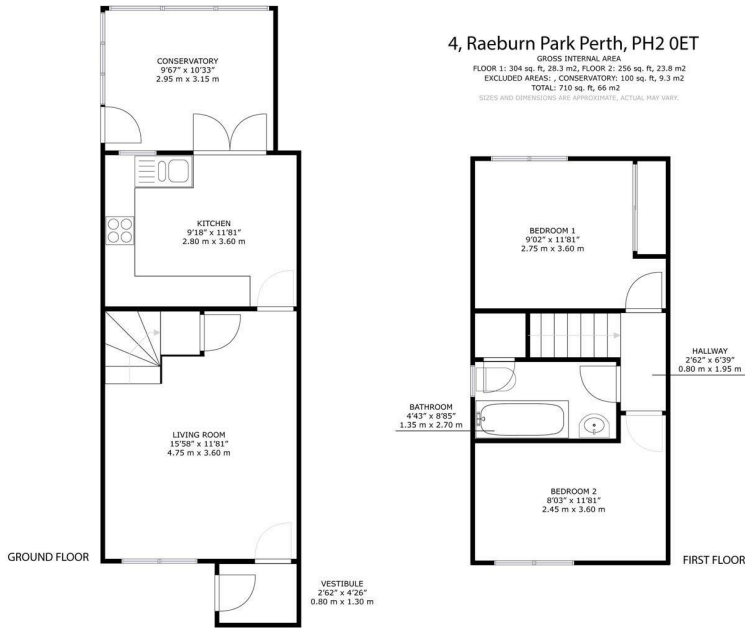
Presented across two levels, accommodation comprises, Ground Floor - entrance vestibule, living room, kitchen and conservatory. First Floor - landing, bathroom and two double bedrooms.

There is a private, well maintained rear garden with a patio area to enjoy the finer weather. There is off street parking available to the front with a detached double garage fitted with light and power.

Location: Raeburn Park is a highly sought-after street within the popular Craigie area of Perth. The property is conveniently positioned within walking distance of a number of local amenities including local shop, eateries, primary school and bus stops. Perth city centre, railway station, bus station and the South Inch parklands can al-so be found close by. National road links can be found via the nearby Glasgow Road and Broxden Roundabout.

- 2 Double Bedrooms
- Close To All Local Amenities
- Double Garage
- Double Glazing
- Gas Central Heating
- Great First Time Buy
- Move In Condition
- Off Street Parking
- Private Garden





These particulars, whilst believed to be accurate are set out as a general outline only for guidance and do not constitute any part of an offer or contract. Intending purchasers should not rely on them as statements of representation of fact, but must satisfy themselves by inspection or otherwise as to their accuracy. No person in this firm's employment has the authority to make or give any representation or warranty in respect of the property.