



**Premier
Properties**
Perth



Blackwater Lodge , Blairgowrie, PH10 7LH

Offers Over £625,000



Blackwater Lodge perfectly blends contemporary comfort with idyllic rural living, offering spacious and versatile accommodation across two levels. The ground floor welcomes you with a bright and inviting entrance hall, leading to a generously sized living room, a stylish family room with a wood-burning stove, a modern open-plan kitchen and dining area with adjoining utility room, a W.C., and an additional versatile family room.

On the first floor, you'll find four well-proportioned double bedrooms—two with en-suite bathrooms—as well as a family bathroom. Bedroom 5 is an additional double bedroom which could be utilised as a study, boasting breathtaking views of the surrounding countryside.

The property benefits from double glazing, oil-fired central heating, and underfloor heating upstairs and downstairs along with solar panels.

Set within an expansive 8-acre plot, Blackwater Lodge is a true haven for equestrian enthusiasts, featuring two large sheds one of which incorporates well maintained stables and a dedicated riding arena. Ample off-street parking is available via a spacious driveway accommodating multiple vehicles, while a triple garage—with power and lighting—offers further parking or space for a workshop. The garage has a fully floored attic and could be converted subject to planning.

Surrounding the main house is a beautifully maintained wraparound garden, predominantly laid to lawn and enhanced by a raised decked area and charming summer house—perfect for relaxing and entertaining during the warmer months. A main feature of the property is a boundary river which provides access to excellent trout fishing opportunities.

Nestled at the gateway to the Scottish Highlands, Bridge of Cally is a picturesque village located in the heart of Perthshire. Surrounded by stunning countryside, rolling hills, and tranquil rivers, the area is a paradise for outdoor enthusiasts, offering easy access to walking, cycling, fishing, and skiing in nearby Glenshee.

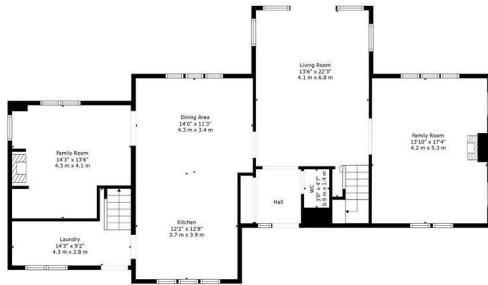
Despite its peaceful rural charm, Bridge of Cally is well connected—just a short drive from the market town of Blairgowrie, which offers a range of shops, cafes, restaurants, and essential amenities. The village itself has a welcoming community atmosphere and is home to a popular hotel, a post office, and local services.

Perfect for those seeking a balance of scenic seclusion and convenience, Bridge of Cally combines the best of country living with accessibility to larger towns and cities including Perth and Dundee.

- Attractive Views
- Desirable Area
- Garage & Workshop
- Large Driveway
- Paddock and riding arena
- 8 Acres



Floor 2



Floor 1

TOTAL: 2112 sq. ft, 196 m²
 FLOOR 1: 1200 sq. ft, 111 m², FLOOR 2: 912 sq. ft, 85 m²
 EXCLUDED AREAS: LOW CEILING: 52 sq. ft, 5 m², "": 61 sq. ft, 5 m², "": 6 sq. ft, 1 m²,
 "": 5 sq. ft, 0 m²

All Measurements Are Calculated By Cubicasa Technology - Deemed Highly Reliable But Not Guaranteed. Visit Our Website - <https://www.filmworx.co.uk>



Energy Efficiency Rating		Current	Potential
Very energy efficient - lower running costs			99
(92 plus) A			
(81-91) B		85	
(69-80) C			
(55-68) D			
(39-54) E			
(21-38) F			
(1-20) G			
Not energy efficient - higher running costs			
Scotland		EU Directive 2002/91/EC	

Environmental Impact (CO ₂) Rating		Current	Potential
Very environmentally friendly - lower CO ₂ emissions			94
(92 plus) A			
(81-91) B		81	
(69-80) C			
(55-68) D			
(39-54) E			
(21-38) F			
(1-20) G			
Not environmentally friendly - higher CO ₂ emissions			
Scotland		EU Directive 2002/91/EC	



These particulars, whilst believed to be accurate are set out as a general outline only for guidance and do not constitute any part of an offer or contract. Intending purchasers should not rely on them as statements of representation of fact, but must satisfy themselves by inspection or otherwise as to their accuracy. No person in this firms employment has the authority to make or give any representation or warranty in respect of the property.